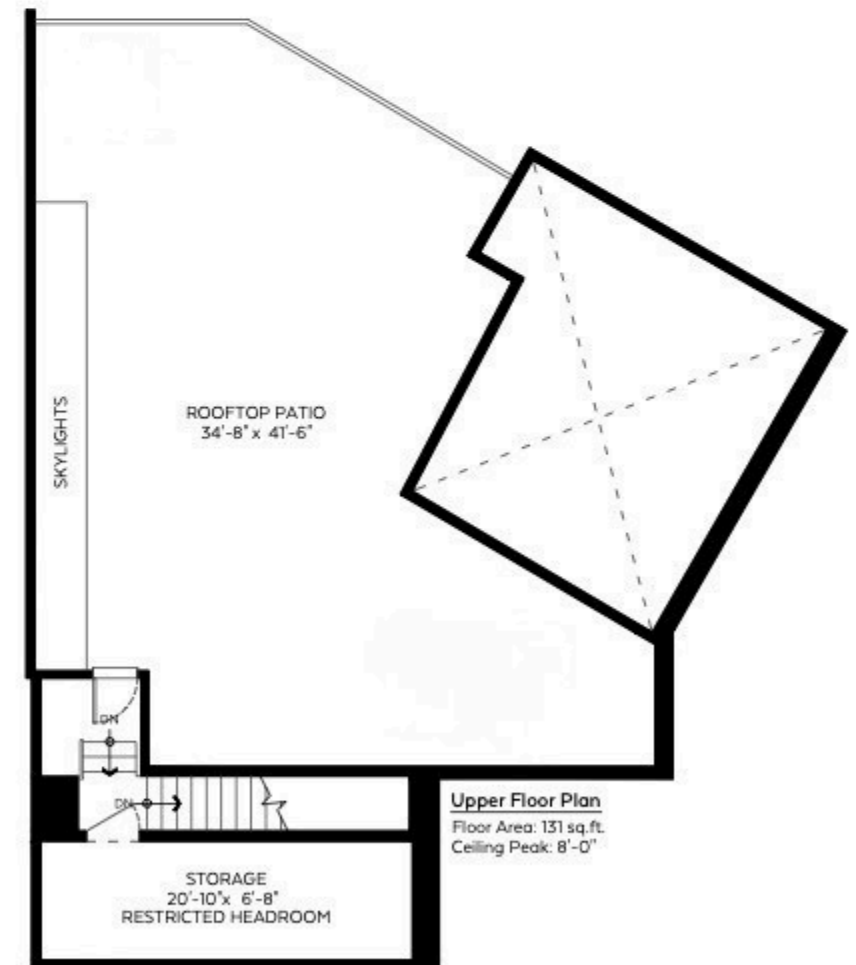
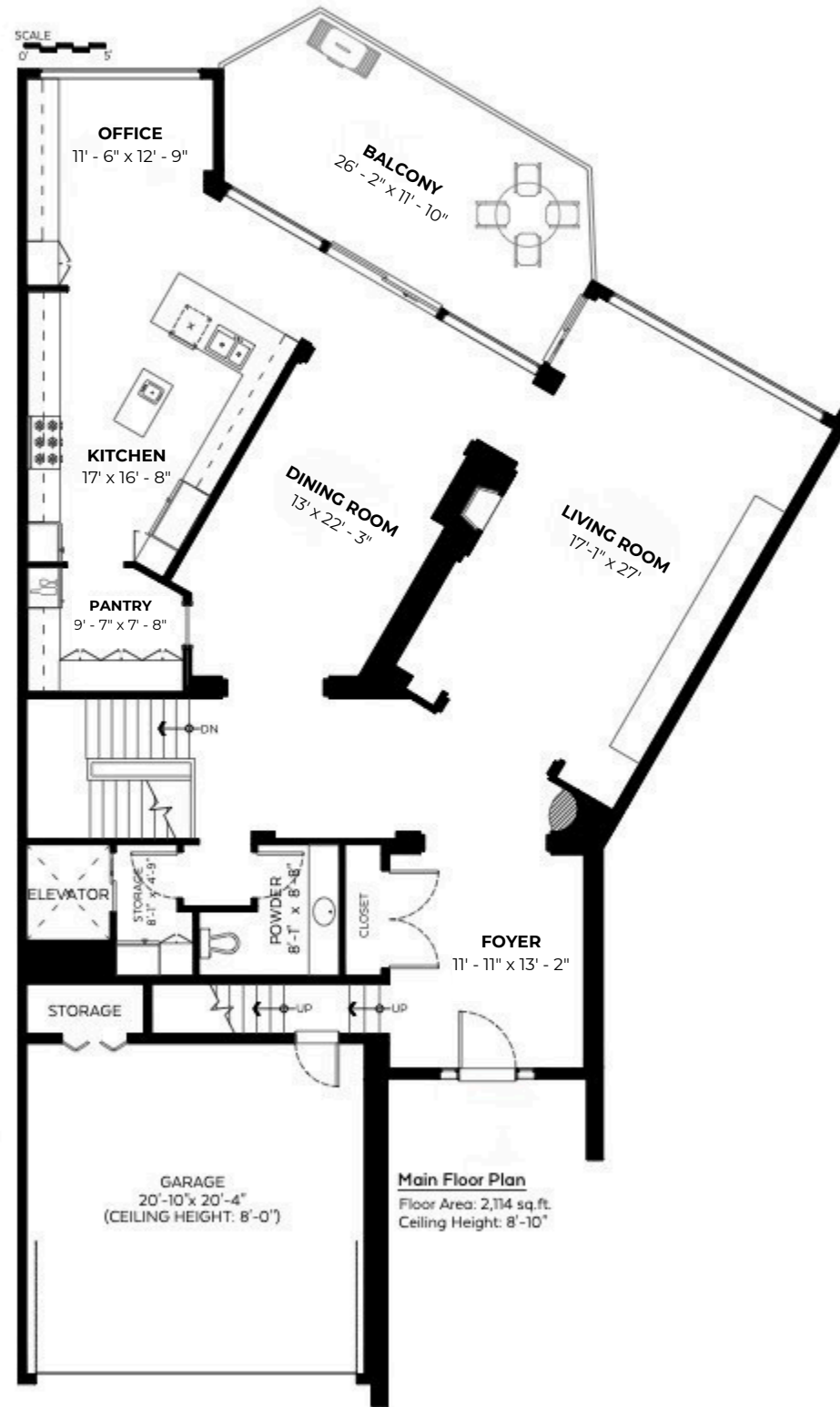


2336 Yewbrook PLACE



Main Floor:	2,114 sq.ft.
Upper Floor:	131 sq.ft.
Lower Floor:	2,085 sq.ft.
Total:	4,330 sq.ft.
Restr. Headroom:	160 sq.ft.
Grand Total:	4,490 sq.ft.

Auxiliary Area

Garage:	500 sq.ft.
Rooftop Patio:	952 sq.ft.
Covered Deck:	348 sq.ft.
Decks:	412 sq.ft.
Balcony:	281 sq.ft.
Ext. Storage:	309 sq.ft.

The plan is for illustrative purposes only not an exact depiction. Dimensions are approximate, may be taken from architectural drawings, and may vary slightly. The plan does not form part of any legal contract or warranty. Buyers are advised to verify dimensions independently if they are important.